

FOR IMMEDIATE RELEASE

## Remote Control Valves for Automated Fastening Systems



**Designed for machine mounted tools and can be ordered as accessories or installed at the factory.**

Everwin tools are widely used in different industries, and they have proven to be reliable and efficient. However, with the ever-evolving technology, manual tools have become outdated and are no longer suitable for industrial automation. Fortunately, here at Everwin we offer different remote valve kits that can be easily installed on our tools, making them suitable for machine-mounted applications and stationary systems.

### Negative or positive connection remote control valve?

Remote valves are signal-controlled, making them ideal for industrial automated applications. Each Everwin tool series has its own kit and options for kits, making it important to consider some important factors when choosing a kit. One of the most important factors to consider is whether to use a **negative or positive connection remote control valve**.

**Negative pressure** connection remote control valves are connected to the nailer using a hose similar to a vacuum hose. When the user activates the valve, it creates a vacuum that draws air from the nailer/stapler, activating the firing mechanism. This type of connection tends to be faster and more energy efficient because it doesn't require much compressed air to operate. However, there are safety concerns when turning off the power at the end of the day that could activate the firing mechanism as the pressure turns off. Everwin Remote Control Valves that fall under this type include :

- ***RCVA1 with a 4mm straight fitting***
- ***RCVA2 with a 4mm elbow fitting***
- ***RCVA2 4mm straight fit valve.***
- ***SN41 Remote fire valve (valve only)***

**Positive pressure** connection remote control valves, on the other hand, are connected to the nailer using a high-pressure air hose. When the user activates the valve, it releases a burst of high-pressure air that directly activates the firing mechanism in the nailer or stapler. This type tends to be a bit slower than a negative connection, more energy intensive but considered safer. EVERWIN Remote Control Valves that fall under this type include :

- ***RCVA 3 with a 6mm elbow fitting***
- ***TVA2-F that can be installed on our 18-gauge tools.***
- ***PS50 Remote Control Trigger Valve***
- ***Remote Trigger Block*** can be installed on any of our SN40 or SN50 series staplers. This type comes with lower trip components while the trigger and valve remain intact.
- ***Electric Type Valve*** is usually paired with a mac valve, which can be installed on our coil nailers, strip nailers, and SN40/50 series staplers.

### Elbow or Straight Fitting connected to Valve?

It is also important to consider the type of fitting to use, whether an elbow fitting or a straight fitting, and the valve opening size. The choice between a **straight fitting** and an **elbow fitting** will depend

## OFFICIAL PRESS RELEASE

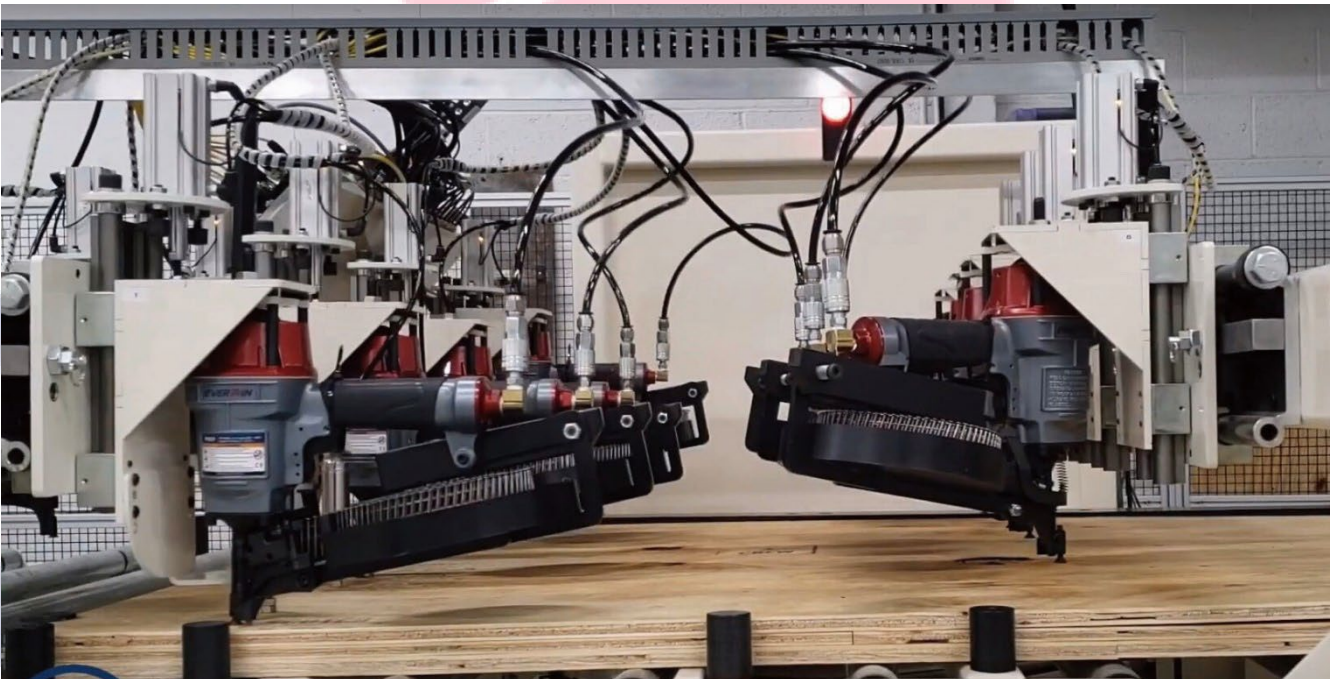
on the specific needs of the user and the application. If there is enough space to make a straight connection and kinks in the hose aren't a concern, a straight fitting may be the most appropriate choice. However, if space is limited or the hose needs to be routed in a particular direction, an elbow fitting may be a better option.

### Size of Hose connected to Valve?

Using a **4mm or 6mm hose** for air connection would depend on air flow rate, the distance between the air source and the point of use, and the pressure required for the application. In general, a **6mm hose** would be preferred for applications that require a higher air flow rate and where longer distances need to be covered, as the larger diameter allows for more air to flow through. A 4mm hose would be suitable for applications where a lower air flow rate is required, or where the distance between the air source and the point of use is shorter.

### Everwin Automated Line-up for Automated Fastening Tools

Our extensive range of machine-mounted nailers and staplers are designed for optimal performance in automated systems.



### Automated Industrial Nailers

Among our most popular models are the coil nailers, such as the [PN70PAL](#), [PN80PAL](#), [PN90PAL](#), and PN100BPAL which offer superior efficiency in high-volume applications. For those seeking

## OFFICIAL PRESS RELEASE

extended capacity, our strip nailers, including the FSN34100LM2, FSN2283-LM, FSN130-LM, and FSN160LM, provide the convenience of longer magazines.

### **Automated Industrial Staplers**

Additionally, our staplers, like the [SN50S5LM](#), [SN50S4LM](#), [SN402PLM](#) and [SN50S53MAG](#), deliver versatility with double or even triple magazine length options. For precise, finishing applications, the FN1850PAL finish nailer stands out for its reliability and ease of integration into automated systems.

Choosing the right remote valve kit is essential for a successful automation line setup. It is important to consider the type of connection, the fitting type, and the valve opening size when choosing a kit. If you have any questions or need guidance on your next automation line set up, don't hesitate to reach out to your nearest EVERWIN dealer near you.